



智慧能源 / 绿色建筑 / 新型农业 系统集成商
SMART ENERGY / GREEN BUILDING / INNOVATIVE AGRICULTURAL SYSTEM INTEGRATOR



智慧能源 / 绿色建筑 / 新型农业 系统集成商
SMART ENERGY / GREEN BUILDING / INNOVATIVE AGRICULTURAL SYSTEM INTEGRATOR

折叠式光伏发电舱 Solar Power Container



*参考最终版本或实物实际参数，部分参数修改后恕不复发

公司介绍 / Company Profile



无锡申泰新能源科技有限公司成立于2016年，坐落于国内太阳能光伏产业基地江苏无锡市，是一家以新能源光伏发电及储能业务为基础，以新建筑装配式房屋、新农业分布式种植业务为战略储备，集自主研发、生产、销售及服务为一体的高新技术企业，致力于向全球用户提供全生命周期智慧能源、智能建筑、智慧种植的整体解决方案。

公司目前已申请60余件国家商标及版权，1件国际商标，40余件专利，7件国家发明专利及8件软著；拥有TUV、CE、ISO等国际认证证书；已获得“新四板企业、国家高新技术企业、创新型中小企业、雏鹰三类企业、三星上云企业、科技型中小企业、江苏省民营科技企业”等。

Senta Energy Co., Ltd. was founded in 2016, located in Wuxi, Jiangsu province, the birthplace of the PV industry in China. We focus on solar power system and energy storage business, with new building and new agricultural distributed planting business as the strategic reserve. Set independent research and development, production, sales and service as one of the high-tech enterprises, is committed to providing global users with the whole life cycle intelligent energy, intelligent building, intelligent planting overall solutions.

Senta has TUV/CE/ISO and other international certification and management system certification, Applied for more than 60 invention patents and soft publications, more than 40 trademarks and Copyrights. and Senta was Awarded "National HIGH-TECH Enterprise", " Jiangsu Private Science and Technology Enterprise ", " Small and medium-sized science and technology Enterprise ", " Fledgling Enterprise "and other qualifications.

生产基地 / Manufacturing Base



■ 折叠式光伏发电舱 / Solar PV Container



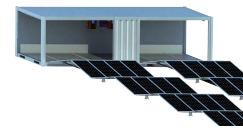
SC08GP-M-20K P1



SC10GP-M-40K P2



SC20GP-M-80K P3
SC20HQ-M-100K P4



SC40GP-M-160K P5
SC40HQ-M-200K P6

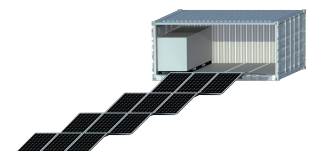
■ 折叠式发电储能舱 / Solar ESS Container



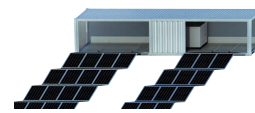
SC08GP-M-18K20 P7



SC10GP-M-30K40 P8



SC20GP-M-60K215 P9
SC20HQ-M-75K215 P10



SC40GP-M-140K215 P11



SC40HQ-M-150K430 P12

■ 产品特性 / Product Features

快速组装
Fast assembly

安装简单
Simple to install

灵活便捷
Flexible

安全可靠
Safe and reliable

即插即用
Plug and play

模块化
Modularized

折叠式光伏发电舱 / Solar PV Container- SC08GP-M-20K



Overall Configurations

| | | |
|---------|-----------------------------------|--------------|
| Package | Package Products Model | SC08GP-M-20K |
| | Solar Array Capacity (Pmax / kWp) | 21.6 |
| | Total Weight (Tons) | 5.9 |
| | Unfolded Footprint (L*W*H/m) | 63*2.2*0.5 |
| | Folded Footprint (L*W*H/m) | 2.2*1.7*1.7 |
| | Max. Slope Limit | 1% |
| | Orientation | Any azimuth |
| | Complete unfolding Time (mins) | 60 |
| | Complete folding Time (mins) | 50 |
| | Installation Persons | 4 |

① Container

| | |
|--------------------------------|----------------|
| Type of Container | 8GP |
| External Dimensions (L*W*H/mm) | 2900*2200*2200 |
| Container Weight (Tons) | 1.6 |

③ Inverter

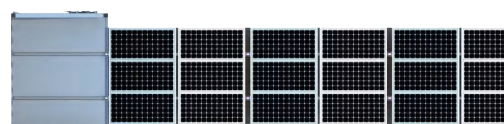
| | |
|---------------------------------|----------------------------|
| Module Type | SUN-20K-G03 |
| Inverter Type | On grid |
| Quantity of inverters (sets) | 1 |
| Max.PV Power(Pmax/Wp) | 26000 |
| Nominal AC output power (W) | 20000 |
| Maximum AC output power(W) | 22000 |
| Nominal AC voltage(V) | 3L/N/PE 220/380V, 230/400V |
| AC grid frequency range(Hz) | 50 / 60 (Optional) |
| Maximum output current(A) | 33.3/31.9 |
| Dimensions(WxHxD/mm) | 330x508x206 |
| Weight(kg) | 20.8 |
| Operating temperature range(°C) | -25~65°C, >45°C derating |
| Communication | RS485/RS232/Wifi/LAN |

② Solar Panel

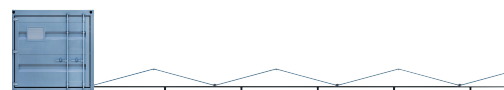
| | |
|---------------------------------|-------------|
| Module Type | SKT200 |
| Max.Power(Pmax/Wp) | 200 |
| Max. Power Voltage (Vm / V) | 24.2 |
| Max. Power Current (Im / A) | 8.26 |
| Open Circuit Voltage (Voc / V) | 25.7 |
| Short Circuit Current (Isc / A) | 9.19 |
| Product Dimensions(mm) | 1500*680*30 |
| Weight(Kgs) | 15.5 |
| Quantity of solar panels (pcs) | 108 |

④ Bracket

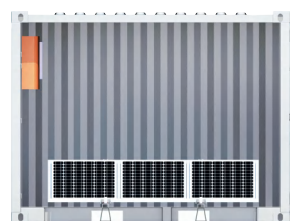
| | |
|--|--------------------------|
| Material | Carbon steel square pipe |
| Single Bracket Dimension (mm) | 2190*1693*30 |
| Number of single frame installation panels | 3 |
| Angle of Unfolding Bracket (°) | 15 |
| Length of Unfolding Bracket (m) | 58 |
| Project area of Unfolding Bracket (m²) | 127 |
| Quantity of bracket (page) | 36 |



Top View



Side View



Front View

折叠式光伏发电舱 / Solar PV Container- SC10GP-M-40K



Overall Configurations

| | | |
|---------|-----------------------------------|--------------|
| Package | Package Products Model | SC10GP-M-40K |
| | Solar Array Capacity (Pmax / kWp) | 40.32 |
| | Total Weight (Tons) | 7.1 |
| | Unfolded Footprint (L*W*H/m) | 91*2.4*0.8 |
| | Folded Footprint (L*W*H/m) | 2.4*2.1*2.0 |
| | Max. Slope Limit | 1% |
| | Orientation | Any azimuth |
| | Complete unfolding Time (mins) | 80 |
| | Complete folding Time (mins) | 60 |
| | Installation Persons | 4 |

① Container

| | |
|--------------------------------|----------------|
| Type of Container | 10GP |
| External Dimensions (L*W*H/mm) | 2991*2438*2591 |
| Container Weight (Tons) | 1.7 |

③ Inverter

| | |
|---------------------------------|----------------------------|
| Module Type | SUN-40K-G03 |
| Inverter Type | On grid |
| Quantity of inverters (sets) | 1 |
| Max.PV Power(Pmax/Wp) | 52000 |
| Nominal AC output power (W) | 40000 |
| Maximum AC output power(W) | 44000 |
| Nominal AC voltage(V) | 3L/N/PE 220/380V, 230/400V |
| AC grid frequency range(Hz) | 50 / 60 (Optional) |
| Maximum output current(A) | 66.7/63.8 |
| Dimensions(WxHxD/mm) | 647.5x537x303.5 |
| Weight(kg) | 44.5 |
| Operating temperature range(°C) | -25~65°C, >45°C derating |
| Communication | RS485/RS232/Wifi/LAN |

② Solar Panel

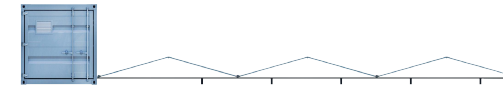
| | |
|---------------------------------|--------------|
| Module Type | LNK-480ND |
| Max.Power(Pmax/Wp) | 480 |
| Max. Power Voltage (Vm / V) | 35.69 |
| Max. Power Current (Im / A) | 13.45 |
| Open Circuit Voltage (Voc / V) | 43.36 |
| Short Circuit Current (Isc / A) | 14.16 |
| Product Dimensions(mm) | 1910*1134*30 |
| Weight(Kgs) | 26 |
| Quantity of solar panels (pcs) | 84 |

④ Bracket

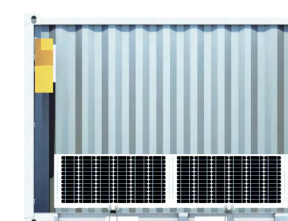
| | |
|--|--------------------------|
| Material | Carbon steel square pipe |
| Single Bracket Dimension (mm) | 2378*2103*30 |
| Number of single frame installation panels | 2 |
| Angle of Unfolding Bracket (°) | 15 |
| Length of Unfolding Bracket (m) | 84 |
| Project area of Unfolding Bracket (m²) | 200 |
| Quantity of bracket (page) | 42 |



Top View



Side View



Front View

折叠式光伏发电舱 / Solar PV Container- SC20GP-M-80K



Overall Configurations

| | | |
|---------|-----------------------------------|--------------|
| Package | Package Products Model | SC20GP-M-80K |
| | Solar Array Capacity (Pmax / kWp) | 80.6 |
| | Total Weight (Tons) | 11 |
| | Unfolded Footprint (L*W*H/m) | 91*4.8*0.8 |
| | Folded Footprint (L*W*H/m) | 4.8*2.0*2.1 |
| | Max. Slope Limit | 1% |
| | Orientation | Any azimuth |
| | Complete unfolding Time (mins) | 120 |
| | Complete folding Time (mins) | 60 |
| | Installation Persons | 4 |

① Container

| | |
|--------------------------------|----------------|
| Module Type | 20GP |
| External Dimensions (L*W*H/mm) | 6058*2438*2591 |
| Container Weight (Tons) | 2.2 |

③ Inverter

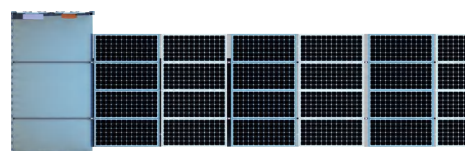
| | |
|---------------------------------|---------------------------|
| Module Type | SUN-80K-G03 |
| Inverter Type | On grid |
| Quantity of inverters (sets) | 1 |
| Max.PV Power(Pmax/Wp) | 104000 |
| Nominal AC output power (W) | 80000 |
| Maximum AC output power(W) | 88000 |
| Nominal AC voltage(V) | 3L/N/PE 220/380V 230/400V |
| AC grid frequency range(Hz) | 50 / 60 (Optional) |
| Maximum output current(A) | 133.3/127.5 |
| Dimensions(WxHxD/mm) | 838*568*324 |
| Weight(kg) | 81 |
| Operating temperature range(°C) | -25~65°C, >45°C derating |
| Communication | RS485/RS232/Wifi/LAN |

② Solar Panel

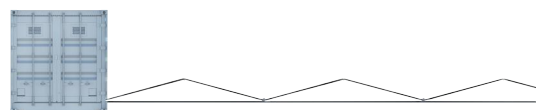
| | |
|---------------------------------|--------------|
| Module Type | LNVK-480ND |
| Max.Power(Pmax/Wp) | 480 |
| Max. Power Voltage (Vm / V) | 35.69 |
| Max. Power Current (Im / A) | 13.45 |
| Open Circuit Voltage (Voc / V) | 43.36 |
| Short Circuit Current (Isc / A) | 14.16 |
| Product Dimensions(mm) | 1910*1134*30 |
| Weight(Kgs) | 26 |
| Quantity of solar panels (pcs) | 168 |

④ Bracket

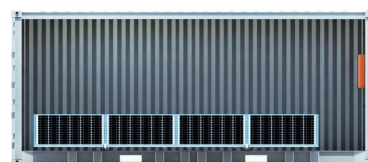
| | |
|--|--------------------------|
| Material | Carbon steel square pipe |
| Material Specification | 4726*2103*30 |
| Number of single frame installation panels | 4 |
| Angle of Unfolding Bracket (°) | 15 |
| Length of Unfolding Bracket (m) | 84 |
| Project area of Unfolding Bracket (m²) | 395 |
| Quantity of bracket (page) | 42 |



Top View



Side View



Front View

折叠式光伏发电舱 / Solar PV Container- SC20HQ-M-100K



Overall Configurations

| | | |
|---------|-----------------------------------|---------------|
| Package | Package Products Model | SC20HQ-M-100K |
| | Solar Array Capacity (Pmax / kWp) | 102.4 |
| | Total Weight (Tons) | 13.5 |
| | Unfolded Footprint (L*W*H/m) | 102*5.4*0.9 |
| | Folded Footprint (L*W*H/m) | 5.4*2.4*2.2 |
| | Max. Slope Limit | 1% |
| | Orientation | Any azimuth |
| | Complete unfolding Time (mins) | 120 |
| | Complete folding Time (mins) | 80 |
| | Installation Persons | 6 |

① Container

| | |
|--------------------------------|----------------|
| Module Type | 20HQ |
| External Dimensions (L*W*H/mm) | 6058*2438*2896 |
| Container Weight (Tons) | 2.5 |

③ Inverter

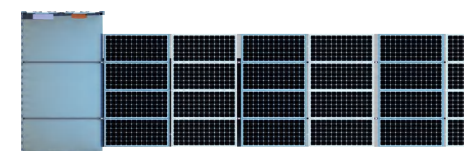
| | |
|---------------------------------|---------------------------|
| Module Type | SUN-100K-G03 |
| Inverter Type | On grid |
| Quantity of inverters (sets) | 1 |
| Max.PV Power(Pmax/Wp) | 150000 |
| Nominal AC output power (W) | 100000 |
| Maximum AC output power(W) | 111000 |
| Nominal AC voltage(V) | 3L/N/PE 220/380V 230/400V |
| AC grid frequency range(Hz) | 50 / 60 (Optional) |
| Maximum output current(A) | 166.7/159.4 |
| Dimensions(WxHxD/mm) | 838*568*324 |
| Weight(kg) | 81 |
| Operating temperature range(°C) | -25~65°C, >45°C derating |
| Communication | RS485/RS232/Wifi/LAN |

② Solar Panel

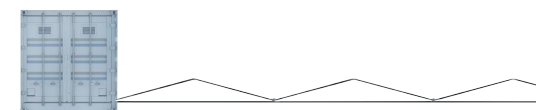
| | |
|---------------------------------|--------------|
| Module Type | DG610W |
| Max.Power(Pmax/Wp) | 610 |
| Max. Power Voltage (Vm / V) | 34.98 |
| Max. Power Current (Im / A) | 17.44 |
| Open Circuit Voltage (Voc / V) | 41.52 |
| Short Circuit Current (Isc / A) | 18.40 |
| Product Dimensions(mm) | 2172*1303*35 |
| Weight(Kgs) | 34.5 |
| Quantity of solar panels (pcs) | 168 |

④ Bracket

| | |
|--|--------------------------|
| Material | Carbon steel square pipe |
| Material Specification | 5427*2375*35 |
| Number of single frame installation panels | 4 |
| Angle of Unfolding Bracket (°) | 15 |
| Length of Unfolding Bracket (m) | 95 |
| Project area of Unfolding Bracket (m²) | 515 |
| Quantity of bracket (page) | 42 |



Top View



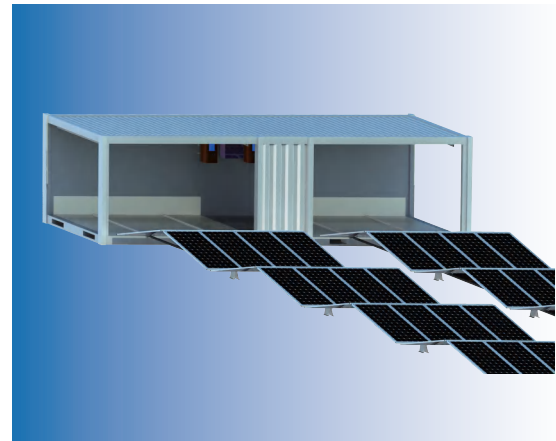
Side View



Front View

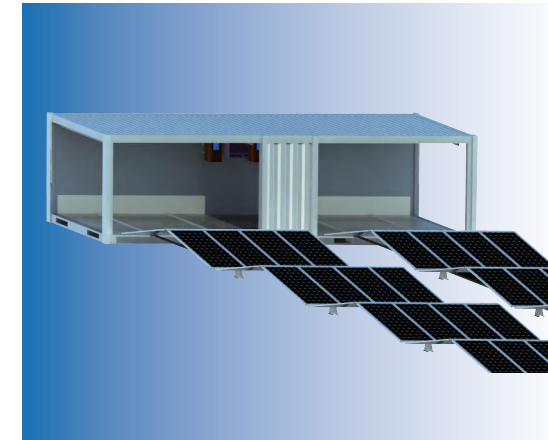
折叠式光伏发电舱 / Solar PV Container- SC40GP-M-160K

折叠式光伏发电舱 / Solar PV Container- SC40HQ-M-200K



Overall Configurations

| | | |
|---------|-----------------------------------|---------------|
| Package | Package Products Model | SC40GP-M-160K |
| | Solar Array Capacity (Pmax / kWp) | 161.3 |
| | Total Weight (Tons) | 21.5 |
| | Unfolded Footprint (L*W*H/m) | 91*9.5*0.8 |
| | Folded Footprint (L*W*H/m) | 9.5*2.0*2.1 |
| | Max. Slope Limit | 1% |
| | Orientation | Any azimuth |
| | Complete unfolding Time (mins) | 160 |
| | Complete folding Time (mins) | 100 |
| | Installation Persons | 8 |



Overall Configurations

| | | |
|---------|-----------------------------------|---------------|
| Package | Package Products Model | SC40HQ-M-200K |
| | Solar Array Capacity (Pmax / kWp) | 204.9 |
| | Total Weight (Tons) | 26.5 |
| | Unfolded Footprint (L*W*H/m) | 102*10.8*0.9 |
| | Folded Footprint (L*W*H/m) | 10.8*2.4*2.2 |
| | Max. Slope Limit | 1% |
| | Orientation | Any azimuth |
| | Complete unfolding Time (mins) | 200 |
| | Complete folding Time (mins) | 120 |
| | Installation Persons | 8 |

① Container

| | |
|--------------------------------|-----------------|
| Module Type | 40GP |
| External Dimensions (L*W*H/mm) | 12192*2438*2591 |
| Container Weight (Tons) | 4.2 |

③ Inverter

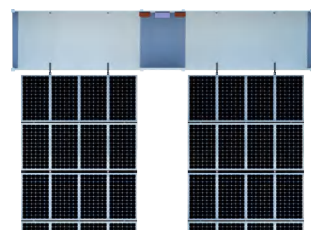
| | |
|---------------------------------|---------------------------|
| Module Type | SUN-80K-G03 |
| Inverter Type | On grid |
| Quantity of inverters (sets) | 2 |
| Max.PV Power(Pmax/Wp) | 104000 |
| Nominal AC output power (W) | 80000 |
| Maximum AC output power(W) | 88000 |
| Nominal AC voltage(V) | 3L/N/PE 220/380V 230/400V |
| AC grid frequency range(Hz) | 50 / 60 (Optional) |
| Maximum output current(A) | 133.3/127.5 |
| Dimensions(WxHxD/mm) | 838*568*324 |
| Weight(kg) | 81 |
| Operating temperature range(°C) | -25~65°C, >45°C derating |
| Communication | RS485/RS232/Wifi/LAN |

② Solar Panel

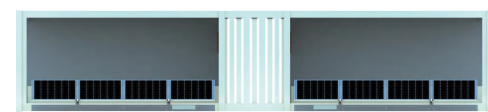
| | |
|---------------------------------|--------------|
| Module Type | LNVK-480ND |
| Max.Power(Pmax/Wp) | 480 |
| Max. Power Voltage (Vm / V) | 35.69 |
| Max. Power Current (Im / A) | 13.45 |
| Open Circuit Voltage (Voc / V) | 43.36 |
| Short Circuit Current (Isc / A) | 14.16 |
| Product Dimensions(mm) | 1910*1134*30 |
| Weight(Kgs) | 26 |
| Quantity of solar panels (pcs) | 336 |

④ Bracket (1/2)

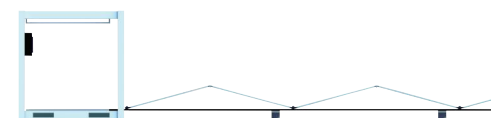
| | |
|--|--------------------------|
| Material | Carbon steel square pipe |
| Material Specification | 4726*2103*30 |
| Number of single frame installation panels | 4 |
| Angle of Unfolding Bracket (°) | 15 |
| Length of Unfolding Bracket (m) | 84 |
| Project area of Unfolding Bracket (m²) | 395 |
| Quantity of bracket (page) | 42 |



Top View



Front View



Side View

① Container

| | |
|--------------------------------|-----------------|
| Module Type | 40HQ |
| External Dimensions (L*W*H/mm) | 12192*2438*2896 |
| Container Weight (Tons) | 4.8 |

③ Inverter

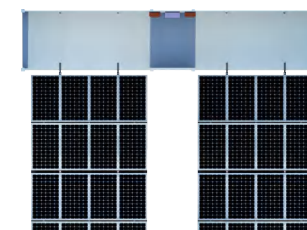
| | |
|---------------------------------|---------------------------|
| Module Type | SUN-100K-G03 |
| Inverter Type | On grid |
| Quantity of inverters (sets) | 2 |
| Max.PV Power(Pmax/Wp) | 150000 |
| Nominal AC output power (W) | 100000 |
| Maximum AC output power(W) | 111000 |
| Nominal AC voltage(V) | 3L/N/PE 220/380V 230/400V |
| AC grid frequency range(Hz) | 50 / 60 (Optional) |
| Maximum output current(A) | 166.7/159.4 |
| Dimensions(WxHxD/mm) | 838*568*324 |
| Weight(kg) | 81 |
| Operating temperature range(°C) | -25~65°C, >45°C derating |
| Communication | RS485/RS232/Wifi/LAN |

② Solar Panel

| | |
|---------------------------------|--------------|
| Module Type | DG610W |
| Max.Power(Pmax/Wp) | 610 |
| Max. Power Voltage (Vm / V) | 34.98 |
| Max. Power Current (Im / A) | 17.44 |
| Open Circuit Voltage (Voc / V) | 41.52 |
| Short Circuit Current (Isc / A) | 18.40 |
| Product Dimensions(mm) | 2172*1303*35 |
| Weight(Kgs) | 34.5 |
| Quantity of solar panels (pcs) | 336 |

④ Bracket (1/2)

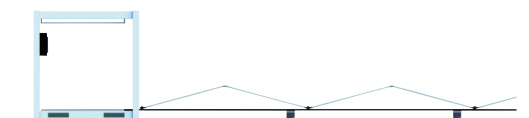
| | |
|--|--------------------------|
| Material | Carbon steel square pipe |
| Material Specification | 5427*2375*35 |
| Number of single frame installation panels | 4 |
| Angle of Unfolding Bracket (°) | 15 |
| Length of Unfolding Bracket (m) | 95 |
| Project area of Unfolding Bracket (m²) | 515 |
| Quantity of bracket (page) | 42 |



Top View

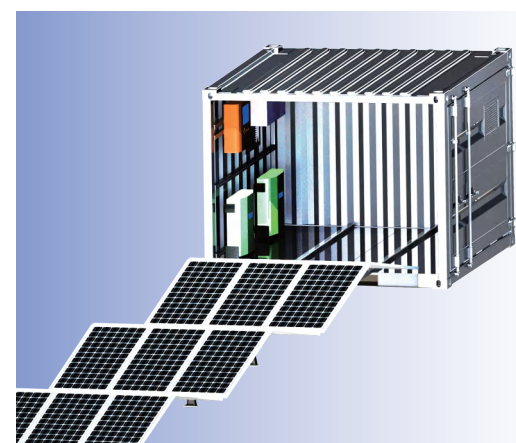


Front View



Side View

折叠式发电储能舱 / Solar ESS Container- SC08GP-M-18K20



Overall Configurations

| | | |
|---------|-----------------------------------|----------------|
| Package | Package Products Model | SC08GP-M-18K20 |
| | Solar Array Capacity (Pmax / kWp) | 18 |
| | Total Weight (Tons) | 5.5 |
| | Unfolded Footprint (L*W*H/m) | 53*2.2*0.5 |
| | Folded Footprint (L*W*H/m) | 2.2*1.4*1.7 |
| | Max. Slope Limit | 1% |
| | Orientation | Any azimuth |
| | Complete unfolding Time (mins) | 50 |
| | Complete folding Time (mins) | 30 |
| | Installation Persons | 4 |

① Container

| | |
|--------------------------------|----------------|
| Type of Container | 8GP |
| External Dimensions (L*W*H/mm) | 2900*2200*2200 |
| Container Weight (Tons) | 1.6 |

② Solar Panel

| | |
|---------------------------------|-------------|
| Module Type | SKT200 |
| Max.Power(Pmax/Wp) | 200 |
| Max. Power Voltage (Vm / V) | 24.2 |
| Max. Power Current (Im / A) | 8.26 |
| Open Circuit Voltage (Voc / V) | 25.7 |
| Short Circuit Current (Isc / A) | 9.19 |
| Product Dimensions(mm) | 1500*680*30 |
| Weight(Kgs) | 15.5 |
| Quantity of solar panels (pcs) | 90 |

③ Inverter

| | |
|---------------------------------|----------------------------|
| Module Type | SUN-10K-SG04LP3-EU |
| Inverter Type | Hybrid |
| Quantity of inverters (sets) | 2 |
| Max.PV Power(Pmax/Wp) | 13000 |
| Nominal AC output power (W) | 10000 |
| Maximum AC output power(W) | 11000 |
| Nominal AC voltage(V) | 3L/N/PE 220/380V, 230/400V |
| AC grid frequency range(Hz) | 50 / 60 (Optional) |
| Maximum output current(A) | 16.7/15.9 |
| Dimensions(WxHxD/mm) | 422x702x281 |
| Weight(kg) | 33.6 |
| Operating temperature range(°C) | 25~65°C, >45°C derating |
| Communication | RS485/RS232/Wifi/LAN |

④ Bracket

| | |
|--|--------------------------|
| Material | Carbon steel square pipe |
| Single Bracket Dimension (mm) | 2190*1693*30 |
| Number of single frame installation panels | 3 |
| Angle of Unfolding Bracket (°) | 15 |
| Length of Unfolding Bracket (m) | 48 |
| Project area of Unfolding Bracket (m²) | 105 |
| Quantity of bracket (page) | 30 |

⑤ Energy Storage System

| | |
|-----------------------------|-------------------------------|
| Module Type | LFP 10kWh/ LV |
| Rated capacity | 200Ah |
| Rated power | 10.24kWh |
| Nominal Dis-charge Power | 5kW |
| Peak Power(Only Discharge) | 10kW for 3 seconds |
| Rated voltage | 51.2V d.c |
| Dimensions(WxHxD/mm) | 585*940*205 |
| Weight(kg) | 116.5 |
| Communication | CAN/RS485 |
| Operating temperature range | -30°C~+50°C, (>45°C Derating) |
| Quantity of Battery (set) | 2 |

⑥ Diesel Generator

| | |
|-----------------------------|-------------|
| Module Type | KDE6700X3 |
| Rated output | 5.5KVA |
| Max. output | 6KVA |
| Rated frequency | 50HZ |
| Rated Voltage | 203/400V |
| Rated current | 7.9A |
| Overall dimension(LxWxH/mm) | 720x492x650 |
| Weight(kg) | 95 |
| Quantity of DG (set) | 1 |

折叠式发电储能舱 / Solar ESS Container- SC10GP-M-30K40



Overall Configurations

| | | |
|---------|-----------------------------------|----------------|
| Package | Package Products Model | SC10GP-M-30K40 |
| | Solar Array Capacity (Pmax / kWp) | 30.7 |
| | Total Weight (Tons) | 6.5 |
| | Unfolded Footprint (L*W*H/m) | 69*2.4*0.8 |
| | Folded Footprint (L*W*H/m) | 2.4*1.5*2.1 |
| | Max. Slope Limit | 1% |
| | Orientation | Any azimuth |
| | Complete unfolding Time (mins) | 60 |
| | Complete folding Time (mins) | 50 |
| | Installation Persons | 4 |

① Container

| | |
|--------------------------------|----------------|
| Type of Container | 10GP |
| External Dimensions (L*W*H/mm) | 2991*2438*2591 |
| Container Weight (Tons) | 1.7 |

② Solar Panel

| | |
|---------------------------------|--------------|
| Module Type | LNK-480ND |
| Max.Power(Pmax/Wp) | 480 |
| Max. Power Voltage (Vm / V) | 35.69 |
| Max. Power Current (Im / A) | 13.45 |
| Open Circuit Voltage (Voc / V) | 43.36 |
| Short Circuit Current (Isc / A) | 14.16 |
| Product Dimensions(mm) | 1910*1134*30 |
| Weight(Kgs) | 26 |
| Quantity of solar panels (pcs) | 64 |

③ Inverter

| | |
|---------------------------------|----------------------------|
| Module Type | SUN-12K-SG04LP3-EU |
| Inverter Type | Hybrid |
| Quantity of inverters (sets) | 2 |
| Max.PV Power(Pmax/Wp) | 15600 |
| Nominal AC output power (W) | 12000 |
| Maximum AC output power(W) | 13200 |
| Nominal AC voltage(V) | 3L/N/PE 220/380V, 230/400V |
| AC grid frequency range(Hz) | 50 / 60 (Optional) |
| Maximum output current(A) | 20/19.1 |
| Dimensions(WxHxD/mm) | 422x702x281 |
| Weight(kg) | 33.6 |
| Operating temperature range(°C) | -25~65°C, >45°C derating |
| Communication | RS485/RS232/Wifi/LAN |

④ Bracket

| | |
|--|--------------------------|
| Material | Carbon steel square pipe |
| Single Bracket Dimension (mm) | 2378*2103*30 |
| Number of single frame installation panels | 2 |
| Angle of Unfolding Bracket (°) | 15 |
| Length of Unfolding Bracket (m) | 64 |
| Project area of Unfolding Bracket (m²) | 154 |
| Quantity of bracket (page) | 32 |

⑤ Energy Storage System

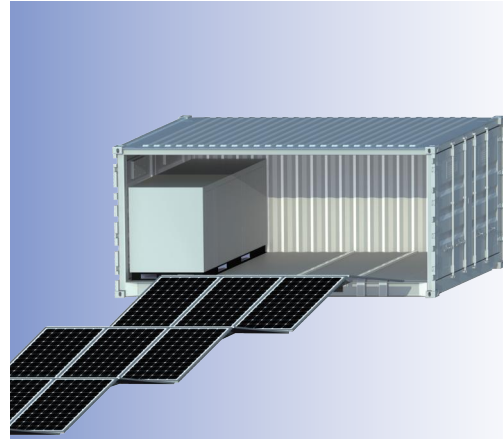
| | |
|-----------------------------|-------------------------------|
| Module Type | LFP 10kWh/ LV |
| Rated capacity | 200Ah |
| Rated power | 10.24kWh |
| Nominal Dis-charge Power | 5kW |
| Peak Power(Only Discharge) | 10kW for 3 seconds |
| Rated voltage | 51.2V d.c |
| Dimensions(WxHxD/mm) | 585*940*205 |
| Weight(kg) | 116.5 |
| Communication | CAN/RS485 |
| Operating temperature range | -30°C~+50°C, (>45°C Derating) |
| Quantity of Battery (set) | 4 |

⑥ Diesel Generator

| | |
|-----------------------------|-------------|
| Module Type | KDE6700X3 |
| Rated output | 5.5KVA |
| Max. output | 6KVA |
| Rated frequency | 50HZ |
| Rated Voltage | 203/400V |
| Rated current | 7.9A |
| Overall dimension(LxWxH/mm) | 720x492x650 |
| Weight(kg) | 95 |
| Quantity of DG (set) | 1 |

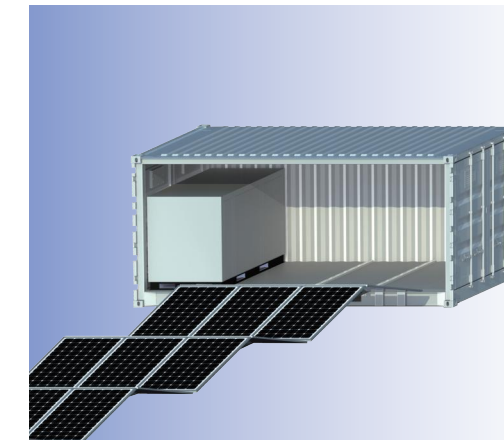
折叠式发电储能舱 / Solar ESS Container- SC20GP-M-60K215

折叠式发电储能舱 / Solar ESS Container- SC20HQ-M-75K215



Overall Configurations

| | | |
|---------|-----------------------------------|-----------------|
| Package | Package Products Model | SC20GP-M-60K215 |
| | Solar Array Capacity (Pmax / kWp) | 60.5 |
| | Total Weight (Tons) | 13.6 |
| | Unfolded Footprint (L*W*H/m) | 91*3.6*0.8 |
| | Folded Footprint (L*W*H/m) | 3.6*2.0*2.1 |
| | Max. Slope Limit | 1% |
| | Orientation | Any azimuth |
| | Complete unfolding Time (mins) | 80 |
| | Complete folding Time (mins) | 60 |
| | Installation Persons | 4 |



Overall Configurations

| | | |
|---------|-----------------------------------|-----------------|
| Package | Package Products Model | SC20HQ-M-75K215 |
| | Solar Array Capacity (Pmax / kWp) | 76.8 |
| | Total Weight (Tons) | 15.2 |
| | Unfolded Footprint (L*W*H/m) | 102*4.1*0.9 |
| | Folded Footprint (L*W*H/m) | 4.1*2.2*2.4 |
| | Max. Slope Limit | 1% |
| | Orientation | Any azimuth |
| | Complete unfolding Time (mins) | 100 |
| | Complete folding Time (mins) | 80 |
| | Installation Persons | 4 |

① Container

| | |
|--------------------------------|----------------|
| Type of Container | 20GP |
| External Dimensions (L*W*H/mm) | 6058*2438*2591 |
| Container Weight (Tons) | 2.2 |

② Solar Panel

| | |
|---------------------------------|--------------|
| Module Type | LNVK-480ND |
| Max.Power(Pmax/Wp) | 480 |
| Max. Power Voltage (Vm / V) | 35.69 |
| Max. Power Current (Im / A) | 13.45 |
| Open Circuit Voltage (Voc / V) | 43.36 |
| Short Circuit Current (Isc / A) | 14.16 |
| Product Dimensions(mm) | 1910*1134*30 |
| Weight(Kgs) | 26 |
| Quantity of solar panels (pcs) | 126 |

③ Energy Storage System

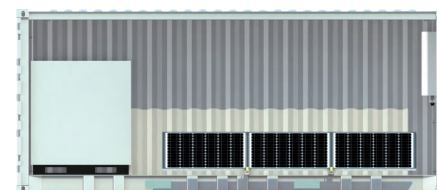
| | |
|-----------------------------|-------------------------------|
| Module Type | DH200F |
| Cell Capacity | 280Ah |
| Rated power | 215kW |
| Nominal Power(AC) | 100kW |
| Nominal Frequency | 50Hz |
| Battery Voltage Range | 672~864V |
| Dimensions(WxHxD/mm) | 1850*1200*2250 |
| Weight(kg) | ~3300kg |
| Communication | CAN/RS485 |
| Operating temperature range | -30°C~+50°C, (>45°C Derating) |

④ Bracket

| | |
|---|--------------------------|
| Material | Carbon steel square pipe |
| Single Bracket Dimension (mm) | 3552*2103*30 |
| Number of single frame installation panels | 3 |
| Angle of Unfolding Bracket (°) | 15 |
| Length of Unfolding Bracket (m) | 84 |
| Project area of Unfolding Bracket (m ²) | 298 |
| Quantity of brackets (pages) | 42 |

⑤ Diesel Generator

| | |
|-----------------------------------|-------------|
| Module Type | KDE16EA3 |
| Rated output | 13.8KVA |
| Max. output | 15KVA |
| Rated frequency | 50HZ |
| Rated Voltage | 203/400V |
| Rated current | 47.8A |
| Overall dimension(LxWxH/mm) | 930*660*910 |
| Weight(kg) | 230 |
| Quantity of Diesel generator(set) | 1 |



Front View

① Container

| | |
|--------------------------------|----------------|
| Type of Container | 20HQ |
| External Dimensions (L*W*H/mm) | 6058*2438*2896 |
| Container Weight (Tons) | 2.5 |

② Solar Panel

| | |
|---------------------------------|--------------|
| Module Type | DG610W |
| Max.Power(Pmax/Wp) | 610 |
| Max. Power Voltage (Vm / V) | 34.98 |
| Max. Power Current (Im / A) | 17.44 |
| Open Circuit Voltage (Voc / V) | 41.52 |
| Short Circuit Current (Isc / A) | 18.40 |
| Product Dimensions(mm) | 2172*1303*35 |
| Weight(Kgs) | 34.5 |
| Quantity of solar panels (pcs) | 126 |

③ Energy Storage System

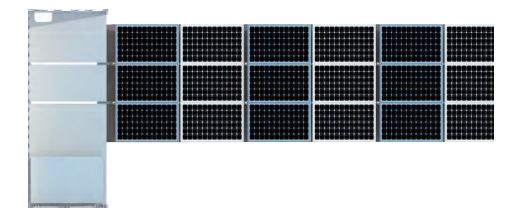
| | |
|-----------------------------|-------------------------------|
| Module Type | DH200F |
| Cell Capacity | 280Ah |
| Rated power | 215kW |
| Nominal Power(AC) | 100kW |
| Nominal Frequency | 50Hz |
| Battery Voltage Range | 672~864V |
| Dimensions(WxHxD/mm) | 1850*1200*2250 |
| Weight(kg) | ~3300kg |
| Communication | CAN/RS485 |
| Operating temperature range | -30°C~+50°C, (>45°C Derating) |

④ Bracket

| | |
|---|--------------------------|
| Material | Carbon steel square pipe |
| Single Bracket Dimension (mm) | 4079*2375*35 |
| Number of single frame installation panels | 3 |
| Angle of Unfolding Bracket (°) | 15 |
| Length of Unfolding Bracket (m) | 95 |
| Project area of Unfolding Bracket (m ²) | 388 |
| Quantity of bracket (page) | 42 |

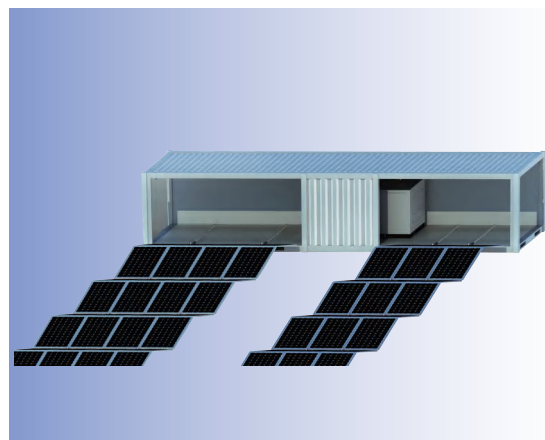
⑤ Diesel Generator

| | |
|-----------------------------|-------------|
| Module Type | KDE16EA3 |
| Rated output | 13.8KVA |
| Max. output | 15KVA |
| Rated frequency | 50HZ |
| Rated Voltage | 203/400V |
| Rated current | 47.8A |
| Overall dimension(LxWxH/mm) | 930*660*910 |
| Weight(kg) | 230 |
| Quantity of DG (set) | 1 |



Top View

折叠式发电储能舱 / Solar ESS Container- SC40GP-M-140K215



Overall Configurations

| | | |
|---------|-----------------------------------|------------------|
| Package | Package Products Model | SC40GP-M-140K215 |
| | Solar Array Capacity (Pmax / kWp) | 141.1 |
| | Total Weight (Tons) | 24.1 |
| | Unfolded Footprint (L*W*H/m) | 91*8.3*0.8 |
| | Folded Footprint (L*W*H/m) | 8.3*2.0*2.1 |
| | Max. Slope Limit | 1% |
| | Orientation | Any azimuth |
| | Complete unfolding Time (mins) | 160 |
| | Complete folding Time (mins) | 90 |
| | Installation Persons | 8 |

① Container

| | |
|--------------------------------|-----------------|
| Type of Container | 40GP |
| External Dimensions (L*W*H/mm) | 12192*2438*2591 |
| Container Weight (Tons) | 4.2 |

② Solar Panel

| | |
|---------------------------------|--------------|
| Module Type | LNVK-480ND |
| Max.Power(Pmax/Wp) | 480 |
| Max. Power Voltage (Vm / V) | 35.69 |
| Max. Power Current (Im / A) | 13.45 |
| Open Circuit Voltage (Voc / V) | 43.36 |
| Short Circuit Current (Isc / A) | 14.16 |
| Product Dimensions(mm) | 1910*1134*30 |
| Weight(Kgs) | 26 |
| Quantity of solar panels (pcs) | 294 |

③ Inverter

| | |
|---------------------------------|----------------------------|
| Module Type | SUN-70K-G03 |
| Inverter Type | On grid |
| Quantity of inverters (sets) | 2 |
| Max.PV Power(Pmax/Wp) | 91000 |
| Nominal AC output power (W) | 70000 |
| Maximum AC output power(W) | 77000 |
| Nominal AC voltage(V) | 3L/N/PE 220/380V, 230/400V |
| AC grid frequency range(Hz) | 50 / 60 (Optional) |
| Maximum output current(A) | 116.7/111.6 |
| Dimensions(WxHxD/mm) | 838*568*324 |
| Weight(kg) | 81 |
| Operating temperature range(°C) | -25~65°C, >45°C derating |
| Communication | RS485/RS232/Wifi/LAN |

④ Bracket (1/2)

| | |
|--|-----------------------------|
| Material | Carbon steel square pipe |
| Single Bracket Dimension (mm) | 4726*2103*30 / 3552*2103*30 |
| Number of single frame installation panels | 4 / 3 |
| Angle of Unfolding Bracket (°) | 15 / 15 |
| Length of Unfolding Bracket (m) | 84 / 84 |
| Project area of Unfolding Bracket (m²) | 395 / 298 |
| Quantity of bracket (page) | 42 / 42 |

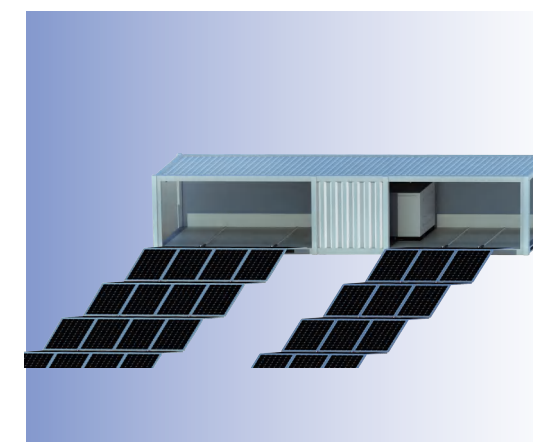
⑤ Energy Storage System

| | |
|-----------------------------|-------------------------------|
| Module Type | DH200F |
| Cell Capacity | 280Ah |
| Rated power | 215kWh |
| Nominal Power(AC) | 100kW |
| Nominal Frequency | 50Hz |
| Battery Voltage Range | 672~864V |
| Dimensions(WxHxD/mm) | 1850*1200*2250 |
| Weight(kg) | ≈3300kg |
| Communication | CAN/RS485 |
| Operating temperature range | -30°C~+50°C, (>45°C Derating) |

⑥ Diesel Generator

| | |
|-----------------------------|-------------|
| Module Type | KDE16EA3 |
| Rated output | 13.8KVA |
| Max. output | 15KVA |
| Rated frequency | 50HZ |
| Rated Voltage | 203/400V |
| Rated current | 47.8A |
| Overall dimension(L×W×H/mm) | 930*660*910 |
| Weight(kg) | 230 |
| Quantity of DG (set) | 1 |

折叠式发电储能舱 / Solar ESS Container- SC40HQ-M-150K430



Overall Configurations

| | | |
|---------|-----------------------------------|------------------|
| Package | Package Products Model | SC40HQ-M-150K430 |
| | Solar Array Capacity (Pmax / kWp) | 153.7 |
| | Total Weight (Tons) | 32.4 |
| | Unfolded Footprint (L*W*H/m) | 102*8.2*0.9 |
| | Folded Footprint (L*W*H/m) | 8.2*2.2*2.4 |
| | Max. Slope Limit | 1% |
| | Orientation | Any azimuth |
| | Complete unfolding Time (mins) | 180 |
| | Complete folding Time (mins) | 100 |
| | Installation Persons | 8 |

① Container

| | |
|--------------------------------|-----------------|
| Type of Container | 40HQ |
| External Dimensions (L*W*H/mm) | 12192*2438*2896 |
| Container Weight (Tons) | 4.8 |

② Solar Panel

| | |
|---------------------------------|--------------|
| Module Type | DG610W |
| Max.Power(Pmax/Wp) | 610 |
| Max. Power Voltage (Vm / V) | 34.98 |
| Max. Power Current (Im / A) | 17.44 |
| Open Circuit Voltage (Voc / V) | 41.52 |
| Short Circuit Current (Isc / A) | 18.40 |
| Product Dimensions(mm) | 2172*1303*35 |
| Weight(Kgs) | 34.5 |
| Quantity of solar panels (pcs) | 252 |

③ Inverter

| | |
|---------------------------------|----------------------------|
| Module Type | SUN-75K-G03 |
| Inverter Type | On grid |
| Quantity of inverters (sets) | 2 |
| Max.PV Power(Pmax/Wp) | 97500 |
| Nominal AC output power (W) | 75000 |
| Maximum AC output power(W) | 82500 |
| Nominal AC voltage(V) | 3L/N/PE 220/380V, 230/400V |
| AC grid frequency range(Hz) | 50 / 60 (Optional) |
| Maximum output current(A) | 125/119.6 |
| Dimensions(WxHxD/mm) | 838*568*324 |
| Weight(kg) | 81 |
| Operating temperature range(°C) | -25~65°C, >45°C derating |
| Communication | RS485/RS232/Wifi/LAN |

④ Bracket (1/2)

| | |
|--|--------------------------|
| Material | Carbon steel square pipe |
| Single Bracket Dimension (mm) | 4079*2375*35 |
| Number of single frame installation panels | 3 |
| Angle of Unfolding Bracket (°) | 15 |
| Length of Unfolding Bracket (m) | 95 |
| Project area of Unfolding Bracket (m²) | 390 |
| Quantity of bracket (page) | 42 |

⑤ Energy Storage System

| | |
|-----------------------------|-------------------------------|
| Module Type | DH200F |
| Cell Capacity | 280Ah |
| Rated power | 215kWh |
| Nominal Power(AC) | 100kW |
| Nominal Frequency | 50Hz |
| Battery Voltage Range | 672~864V |
| Dimensions(WxHxD/mm) | 1850*1200*2250 |
| Weight(kg) | ≈3300kg |
| Communication | CAN/RS485 |
| Operating temperature range | -30°C~+50°C, (>45°C Derating) |

⑥ Diesel Generator

| | |
|-----------------------------|-------------|
| Module Type | KDE16EA3 |
| Rated output | 13.8KVA |
| Max. output | 15KVA |
| Rated frequency | 50HZ |
| Rated Voltage | 203/400V |
| Rated current | 47.8A |
| Overall dimension(L×W×H/mm) | 930*660*910 |
| Weight(kg) | 230 |
| Quantity of DG (set) | 1 |



① 集装箱运输
Transportation Way



② 吊装就位
Hoisting in Position



③ 开箱铺设
Open & Assembly



④ 展开光伏阵列
Unfold Solar PV Array



⑤ 电气接线安装
Cable Installation



⑥ 运行工作
Final Operation



